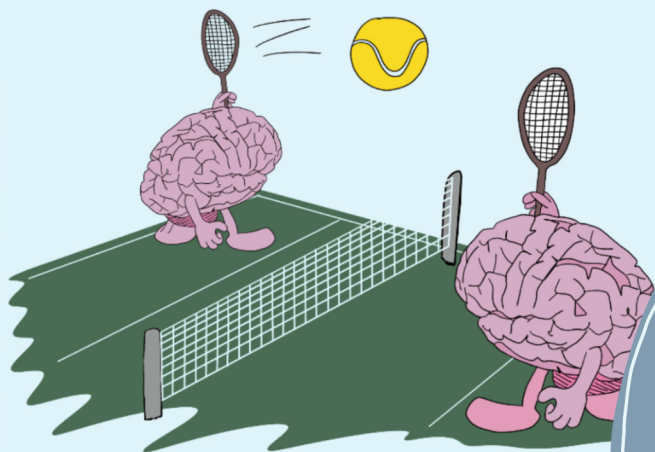


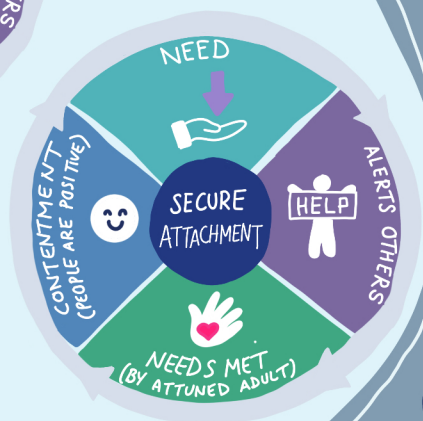
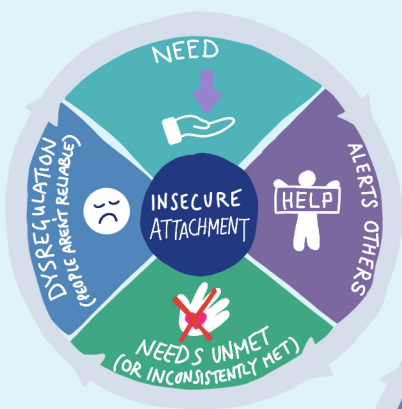
# ROADMAP FOR MODULE: ATTACHMENT

## Serve and Return



1

Still face experiment:  
What are your thoughts  
on the attachment of the  
mother and baby in this  
video?



2

What are the 4 attachment styles?

①

③

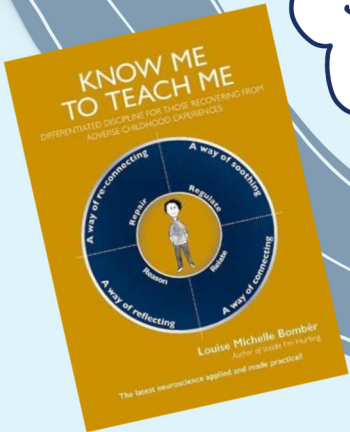
②

④

# ATTACHMENT

3

What principle speaks to you the most in these 6 principles?



How could you nurture one of these principles in your setting?

4

What things would you like to see in your setting that supports attachment?

5

