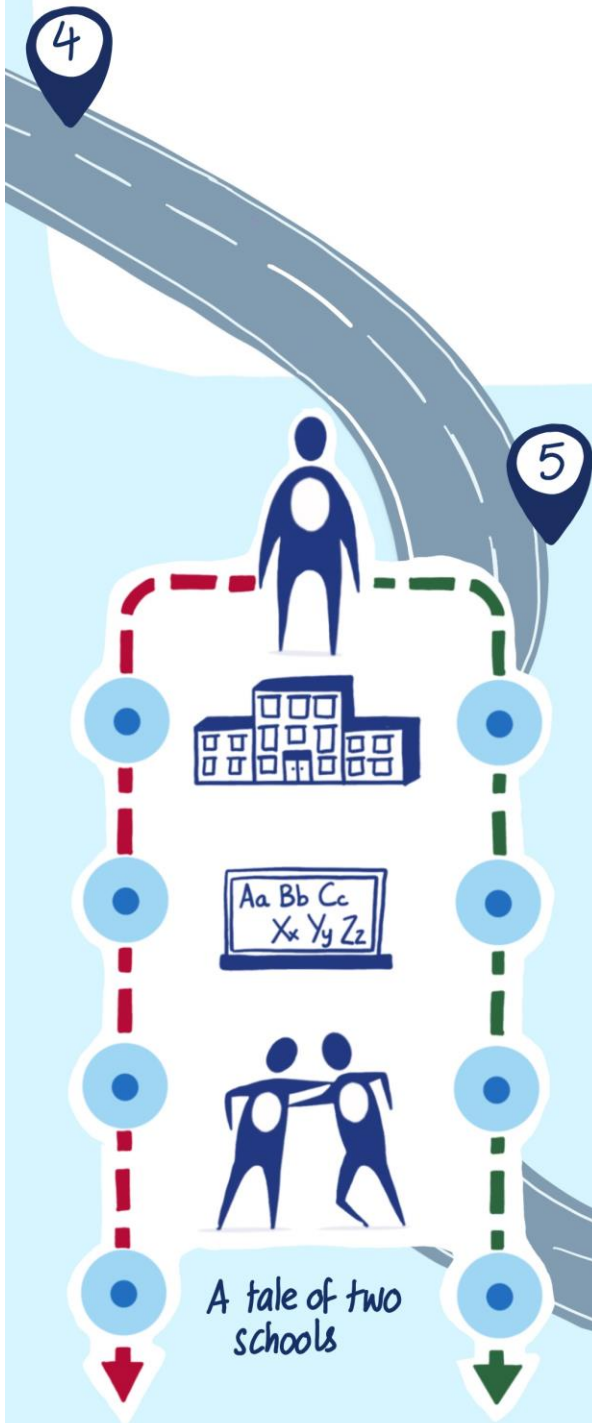


ROADMAP FOR MODULE: BEHAVIOUR

Make your own notes:

BEHAVIOUR MANAGEMENT

BEHAVIOUR DEVELOPMENT



List a pro and a con of each kind of setting

Zero Tolerance:

Blank space for notes under Zero Tolerance.

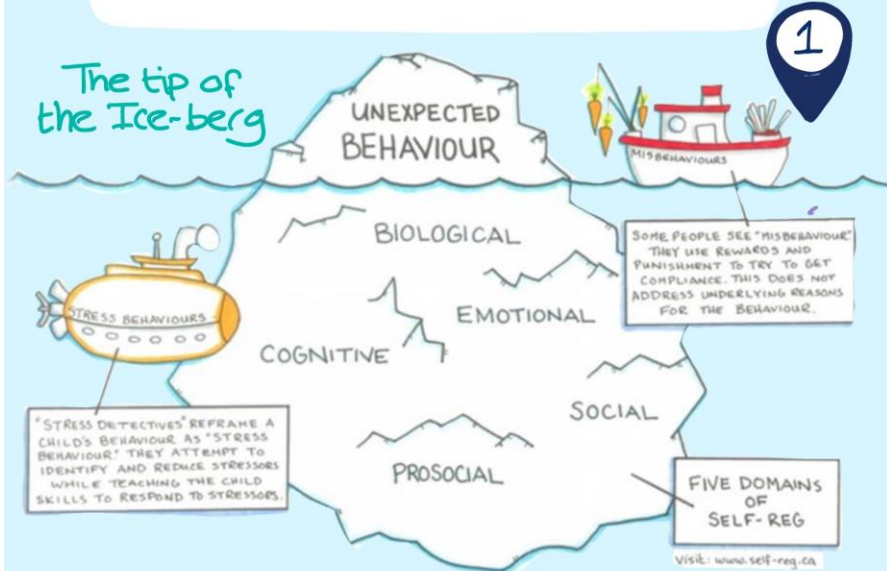
Restorative:

Blank space for notes under Restorative.

ROADMAP FOR MODULE: BEHAVIOUR

OUR BEHAVIOUR IS MORE HONEST THAN OUR WORDS

Behaviour is communication



Behaviour is not always a result of factors within the child's control or "within child factors". It is also a result of a child or young person's wider social-emotional environment and their family history
-Broffebrenner-

2 What are your thoughts around the theories on behaviour?

3 The five domains of regulation: (add any useful notes for you)

Social

Emotional

Biology

Pro-social

Cognitive