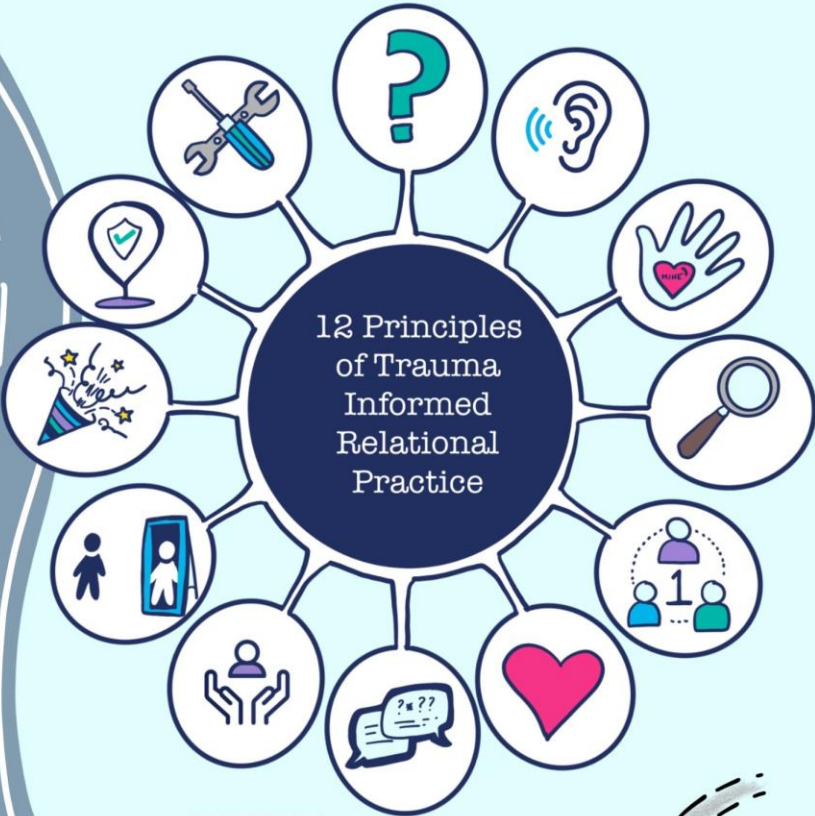


ROADMAP FOR MODULE: PRINCIPLES & VALUES

1

What three principles do you think are most important?

-
-
-



2

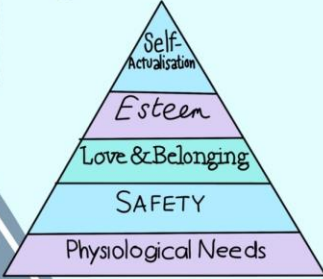
WHAT MIGHT IT LOOK LIKE?

PEOPLE CAN ADMIT A MISTAKE WITHOUT EXPERIENCING TOXIC SHAME

PEOPLE CAN FEEL AND DEMONSTRATE REMORSE

3

CHILDREN CAN MAINTAIN A HEALTHY RECIPROCAL FRIENDSHIP



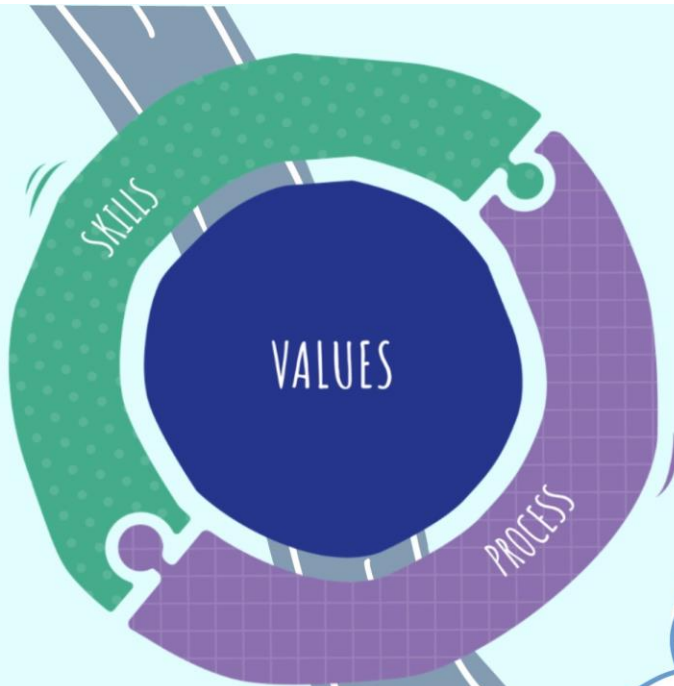
PEOPLE CAN LINK CAUSE & EFFECT

PEOPLE ARE REFLECTIVE

CHILDREN TRUST ADULTS TO MEET THEIR NEEDS

PEOPLE CAN DEMONSTRATE EMPATHY





3

Ultimately, This is a philosophy and set of practices that emphasis inclusion, communication, and relationship building to repair harm rather than simply punish (Morrison & Vaandering, 2012).



4

WHAT CORE VALUES DO YOU THINK ARE IMPORTANT?

| WHAT? | SO WHAT? | NOW WHAT? |
|----------------|-----------------|----------------------|
| ACES awareness | Trauma Informed | Restorative Practice |

ADAPTED FROM BERTON AND SPECKEL

5

What three things have you picked up from this module, that you would like to explore further?

-
-
-

6